

# YOUR ONE-STOP DESTINATION FOR UNFORGETTABLE GROUP EXPERIENCES!

JUMP ABOARD AND EXPLORE

FIND OUT  
MORE &  
**BOOK**  
TODAY

DATE OF ISSUE



8-1962

OFFICIAL



A PLEASURE  
FOR ALL AGES



TRIPADVISOR

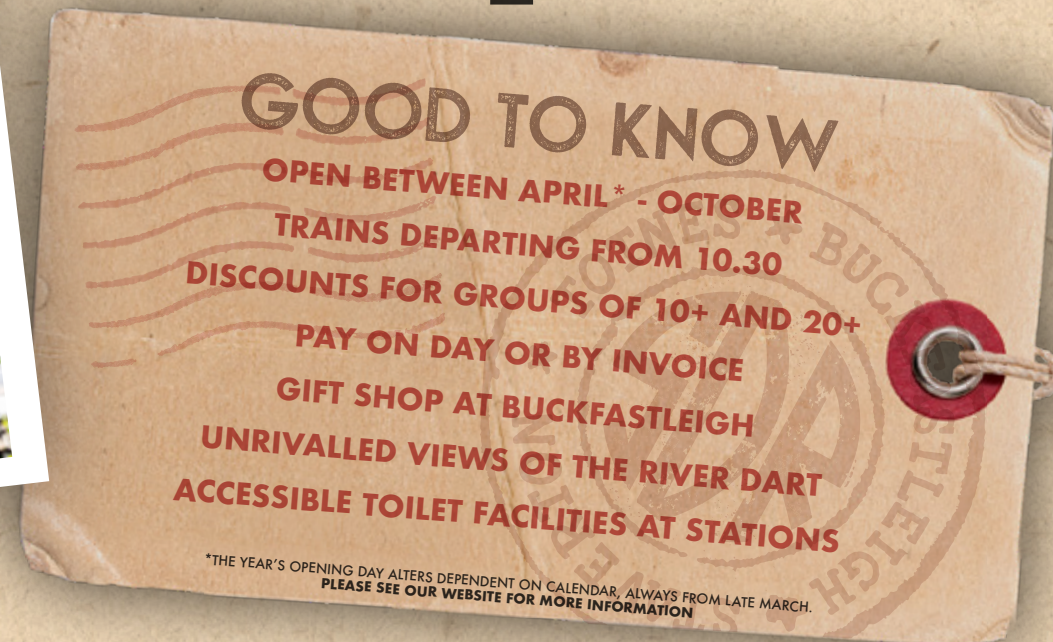
## SOUTH DEVON RAILWAY



[SOUTHDEVONRAILWAY.CO.UK](https://www.southdevonrailway.co.uk)







## WHY VISIT US?

The South Devon Railway is a great destination for coach parties, schools, clubs and group outings! We're more than just historic steam hauled trains ... here are just some of the reasons that we're a must visit!

EASY ACCESS IN A POPULAR LOCATION	FREE COACH PARKING*	GROUP BOOKING DISCOUNT	RESERVED SEATING
JOINT TICKETS WITH LOCAL ATTRACTIONS	ONBOARD CATERING OPTIONS	MUSEUM & GARDENS	MANAGED VISITS

\*Free parking for coaches is located at Buckfastleigh Station only

Our team have extensive experience working with groups and tour operators to deliver quality experiences. We work alongside partners and with the guidance from trade associations to develop tried and tested products that are sure to be a hit with your customers and guests.

You'll be able to catch us at many trade shows and networking events around the country where we'll be happy to discuss your bespoke requirements. Alternatively, our passionate team are on hand to manage your enquiry by phone or email.

The railway is owned and operated by a charitable organisation and supported by around 600 volunteers. This dedication shines through in the passion for service, whether it be with our administration team, to the guards or buffet car attendants.

Our railway operation is managed as part of a heavily regulated and audited safety sector, and we would be pleased to share any risk assessments that you require in relation to your visit.





# YOUR JOURNEY

Take a journey back in time on our 7 mile line, along the valley of the Dart, through some of Devon's most beautiful countryside, rich in wildlife and history. Most of our trains are hauled by historic steam locomotives, creating a nostalgic experience for all age groups!

## BUCKFASTLEIGH STATION

MUSEUM, GARDENS,  
GIFT & MODEL SHOP,  
BIRDIE'S KITCHEN CAFÉ,  
DARTMOOR OTTERS &  
BUCKFAST BUTTERFLIES

BUCKFAST  
ABBEY

## STAVERTON STATION

RIVERSIDE WALKS

THE RIVER DART

TOTNES CASTLE

DARTINGTON HALL

## TOTNES RIVERSIDE STATION

PICNIC AREA, TOTNES TOWN  
& MAINLINE STATION  
TOTNES RARE BREEDS FARM

TOTNES

04



At Buckfastleigh you'll find attractive gardens, Refreshment Rooms, our gift shop and riverside picnic area. You can also view some of our historic locomotives and rolling stock and our museum, which features 1868-built Tiny, the only surviving loco from Brunel's broad gauge, as well as many other interesting exhibits.

Our midway station, Staverton, is a typical small country station that has changed little in 150 years.

At Totnes Riverside, there is a link to the local footpath network, which takes you to the main line station, as well as the historic town centre, which is a little further away. There is a coach pick up and drop off adjacent to the main line station. You can take a single or return journey. Most groups find it more convenient to start and finish their journeys at Buckfastleigh, where there is free coach and minibus parking with step-free access close to the platform.

If you do decide to leave or join the train at Totnes, please note there is a c. 450 metre walk between our station and the pick up and drop off point at the main line station, which might not be suitable for less able visitors.

The return train journey lasts up to one hour 20 minutes. The single journey is half an hour. There is plenty to see at Buckfastleigh Station for a leisurely visit of an hour or more.



05



# ELEVATE YOUR JOURNEY!

We have various options available to enhance your visit with us, all of which can be added to your booking.



*Enjoy a delicious treat*

## CREAM TEA

Fresh scone with clotted cream, jam, and tea or coffee served at your seat.



*Timeless delight!*

## DEVON PASTY

Fresh pasty served at your seat: steak, cheese & onion, vegan, or roasted vegetable.



*Cute Otters*

**Butterflies & Otters**

## BUTTERFLIES & OTTERS

A group favorite! Visit Dartmoor Otters & Buckfast Butterflies, all to be found at Buckfastleigh Station.

## TOTNES RARE BREEDS FARM

While at Totnes Riverside, visit the rare breeds farm. We'll gladly coordinate your trip.



*Animal fun!*

**TOTNES Rare Breeds FARM**

Looking for a unique group experience? Contact us to customise options like Afternoon Teas, Sunday Lunches, or travel in an open veranda Goods Brake Van!

## 200 YEARS OF TRAIN TRAVEL

2025 marks two hundred years since the first railway journey. In celebration of this anniversary the rail industry has come together to develop Railway 200, a year-long programme of national events.

Make sure this important anniversary is in your 2025 catalogue and be sure to include a journey on the historic South Devon Railway.



Buckfast Abbey, near Buckfastleigh Station, is a top West Country attraction and home to a working community of Benedictine monks. Founded in 1018 by King Canute, it thrived until Henry VIII dissolved the monasteries.

The Monastic Way Exhibition offers insight into the monks' lives and religious history across Europe.



The South Devon Railway sits on the southern fringes of The Dartmoor National Park, a must-visit for its wild moorlands, stunning views, wooded valleys, rivers, and historic tors.

Rich in history dating back to Neolithic times, it's a magical, destination to explore.

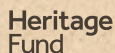
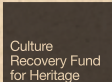




# JUMP ABOARD & EXPLORE



# SOUTH DEVON RAILWAY



## SOUTHDEVONRAILWAY.CO.UK

A CHARITABLE COMMUNITY BENEFIT SOCIETY. NO. RS008114

